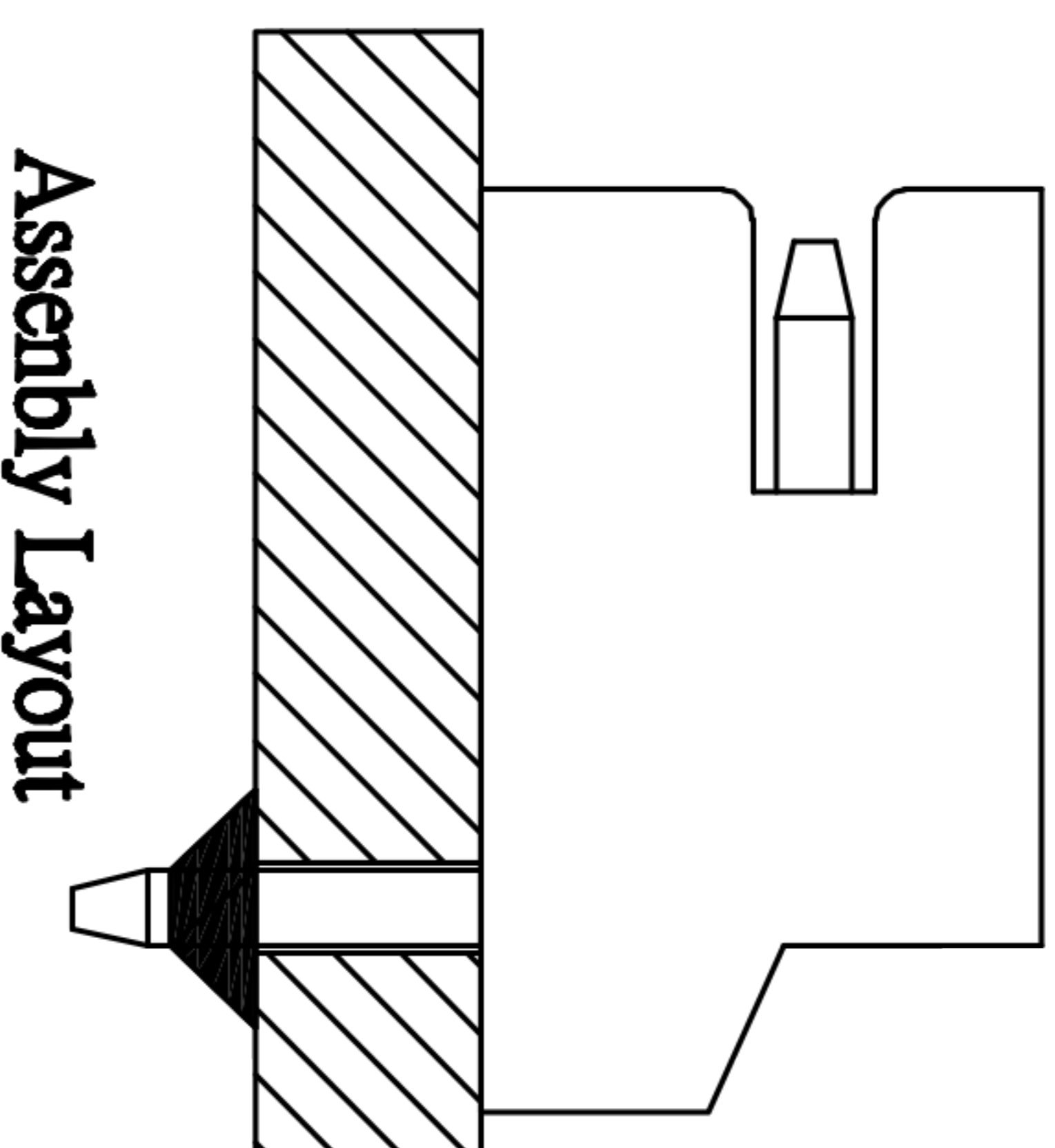
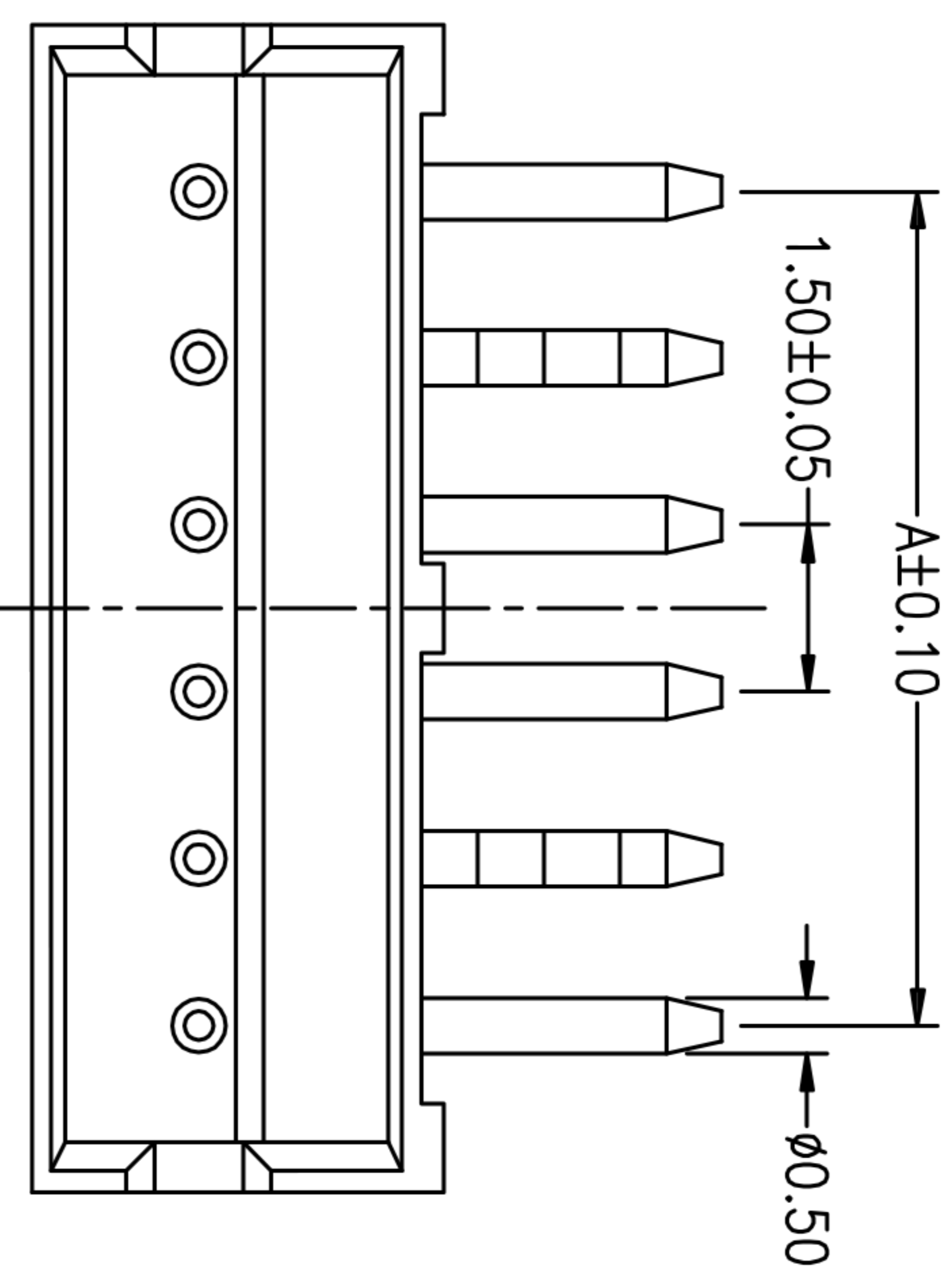


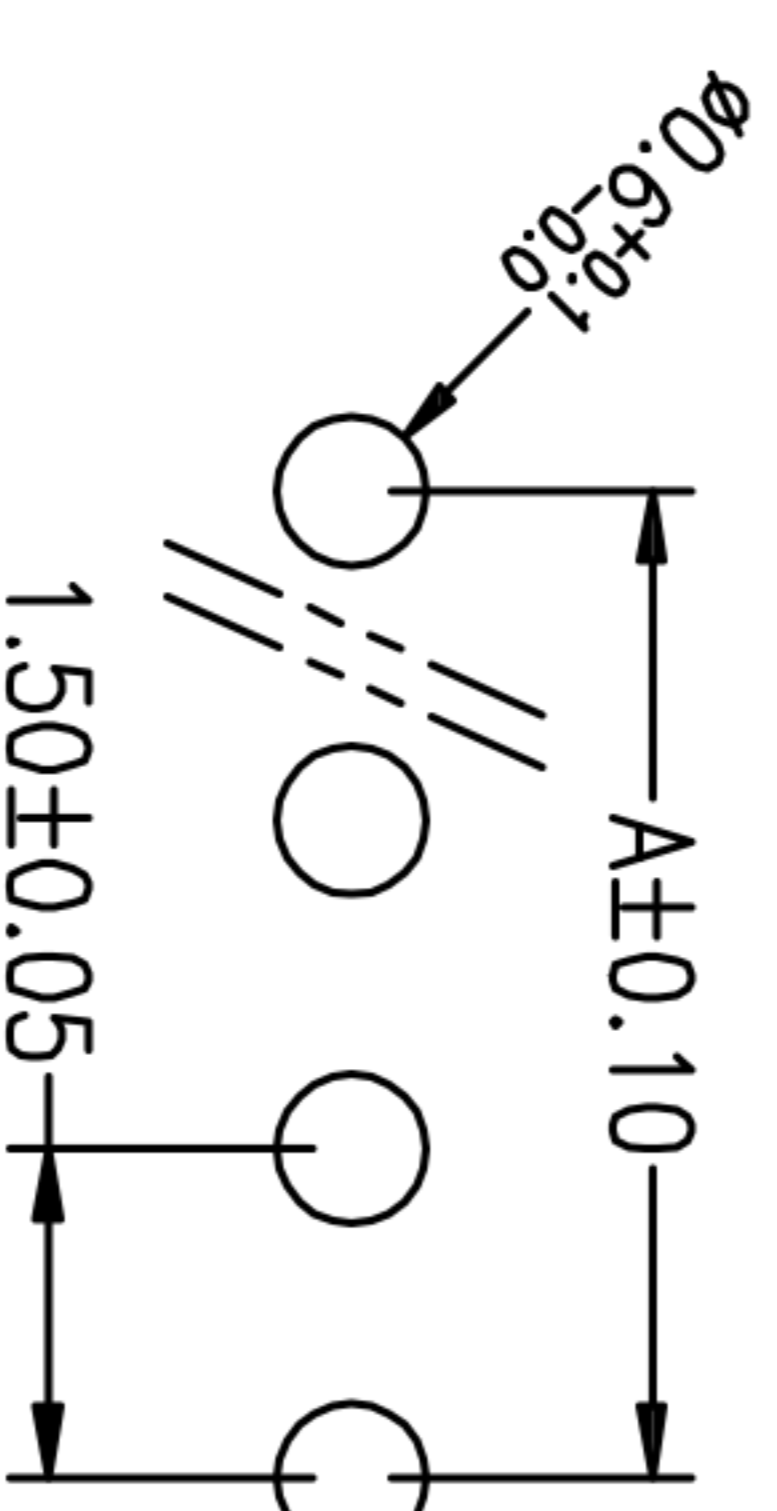
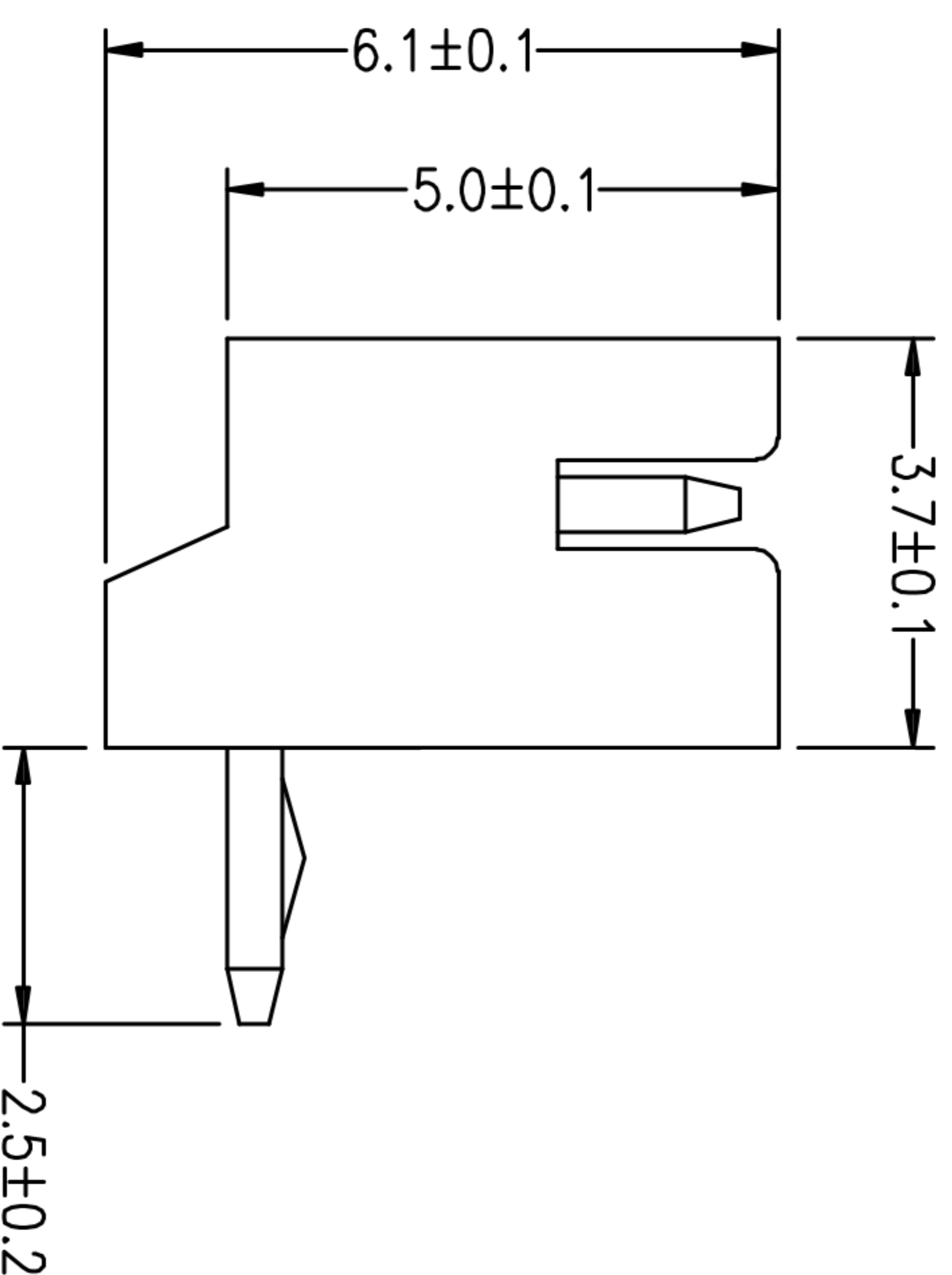
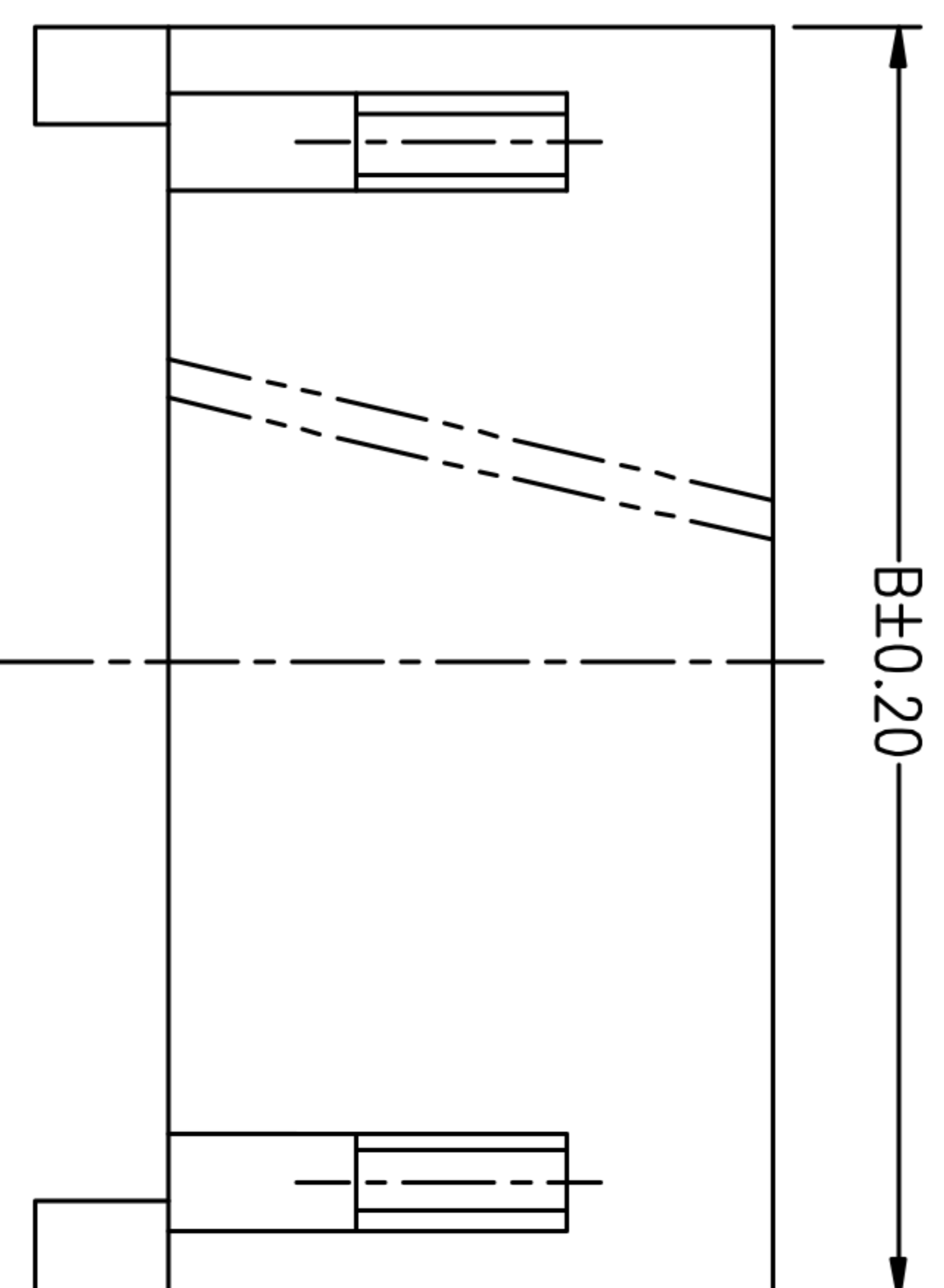
尺寸 \ Pin数	2P	3P	4P	5P	6P	7P	8P	9P	10P	11P	12P	13P	14P	15P
A	1.50	3.00	4.50	6.00	7.50	9.00	10.50	12.00	13.50	15.00	16.50	18.00	19.50	21.00
B	4.50	6.00	7.50	9.00	10.50	12.00	13.50	15.00	16.50	18.00	19.50	21.00	22.50	24.00

技术参数 SPECIFICATIONS

- ◆ 极数: 2~15 Poles: 2~15
 - ◆ 适用线规: AWG#28-#22
Applicable: AWG#28-#22
 - ◆ 额定电压: AC,DC,150V(有效值)
Voltage rating: AC,DC,150V(rms)
 - ◆ 额定电流: 1.0A,AC,DC
Current rating: 1.0A,AC,DC
 - ◆ 耐压值: 500V AC/minute
Withstand voltage: 500V AC/minute
 - ◆ 工作温度: -25°C~+85°C
Working Temperature: -25°C~+85°C
 - ◆ 绝缘电阻: $\geq 1000 M\Omega$
Insulation resistance: $\geq 1000 M\Omega$
 - ◆ 接触电阻: $\leq 0.02 \Omega$
Contact resistance: $\leq 0.02 \Omega$
- 材料 MATERIAL**
- ◆ 插针: 黄铜 (PIN: Bronze)
 - ◆ A座: Nylon (Waiver: Nylon)
- 包装方式 PACKAGE**
- ◆ 管装 Pipe Package
 - ◆ 袋装 Bag Package



Assembly Layout



P.C.B Layout

APPROVALS		DATE	深圳市联丰电子有限公司 SHENZHEN LINFENG ELECTRONIC CO.,LTD	
DRAWN	ZHIWEI.CHEN	2015.07.07		
CHECKED				
APPROVALS				
TOLERANCES ARE		30~以上	±0.30	ANGLE
		10~30	±0.20	
		5~10	±0.15	
		~ 5	±0.10	±2°
PART NO.	GP01-1500WR-NP	UNIT:	mm	SCALE: 1:1
TITLE:		DRAWING NO.		PROJ:
ECN NO.	REV. A	DATE:		SHEET 1 OF 1
DESCRIPTION: NEW				