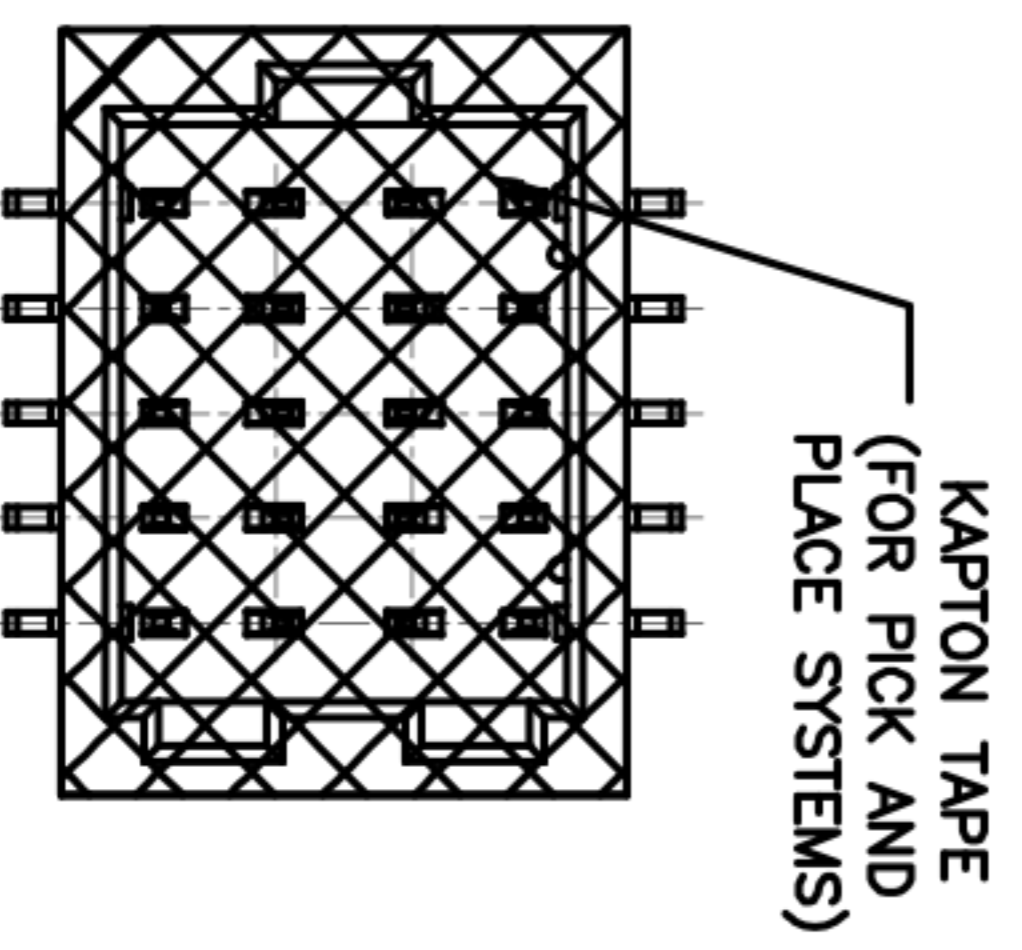


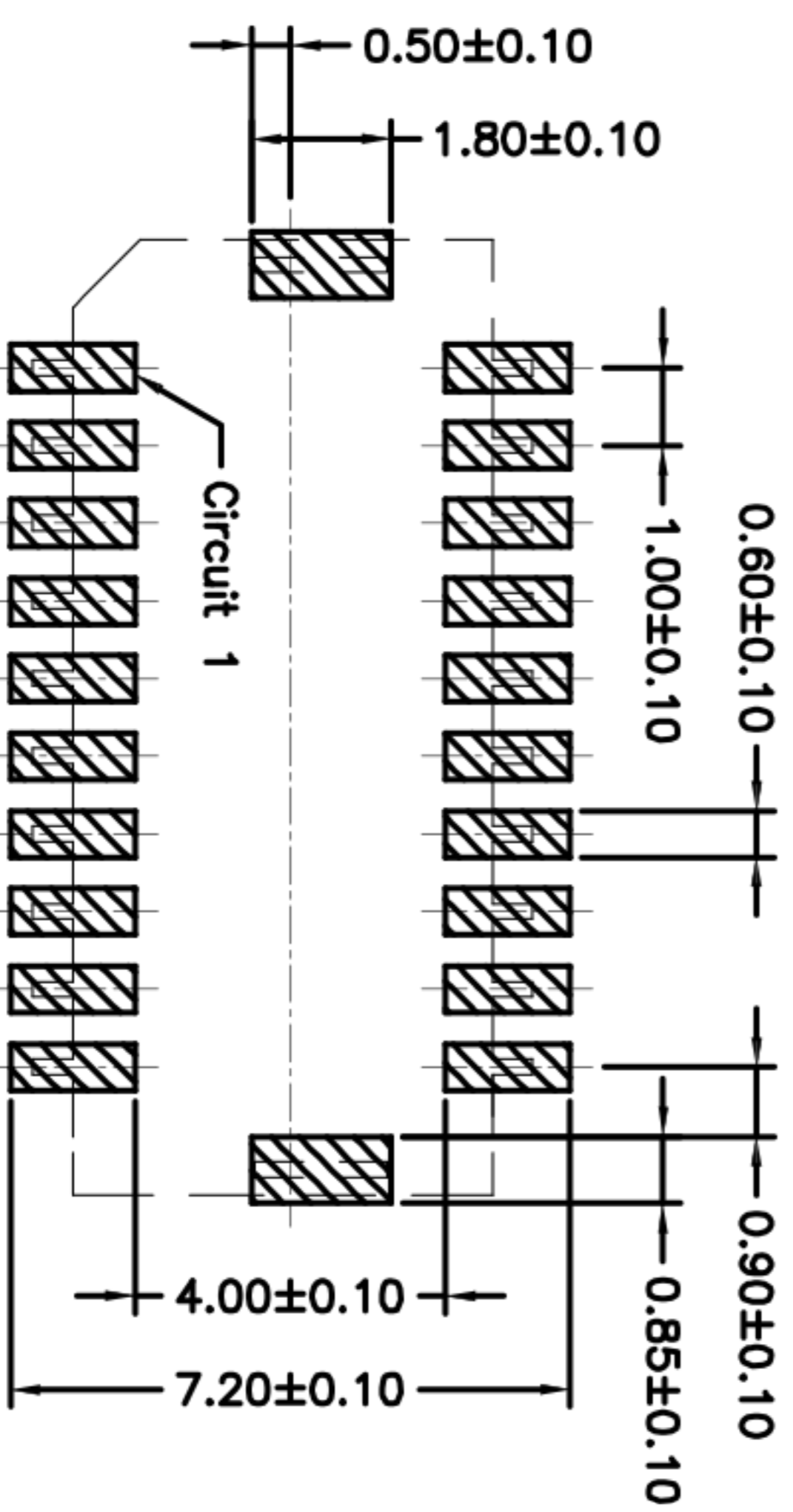
SPECIFICATIONS
 Current Rating: 1A AC,DC
 Voltage Rating: 50V AC,DC
 Temperature Range: -25°C ~ +85°C
 Contact Resistance: 20mΩ Max.
 Insulation Resistance: 100MΩ Min.
 Withstanding Voltage: 500V AC/minute
 Pin Material: Phosphor Bronze
 Solder Tabs: Brass
 Cap: LCP,UL94V-0,Natural(Beige)

Circuit No.	Dimensions	
	A	B
2X05P	4.00	7.30
2X06P	5.00	8.30
2X08P	7.00	10.30
2X10P	9.00	12.30
2X15P	14.00	17.30
2X20P	19.00	22.30
2X25P	24.00	27.30



2X05P

PCB LAYOUT



ECN NO.	REV.	DATE.	DESCRIPTION.	CHANGE.	CHECK.	APPRO.
	A		NEW			

APPROVALS		DATE	TITLE:	
DRAWN	ZHIWEI.CHEN	2015.07.07	1.00mm Crimp Style Connector	
CHECKED			PART NO. GP01-1001WVS-2XNPN	
APPROVALS			SCALE: 1:1	
TOLERANCES ARE			DRAWING NO.	
30~以上	±0.30	ANGLE	PROJ.	
10~30	±0.20		SHEET 1 OF 1	
5~10	±0.15	±2°		
~ 5	±0.10			



深圳市联丰电子有限公司
 SHENZHEN LINFENGYING ELECTRONIC CO.,LTD